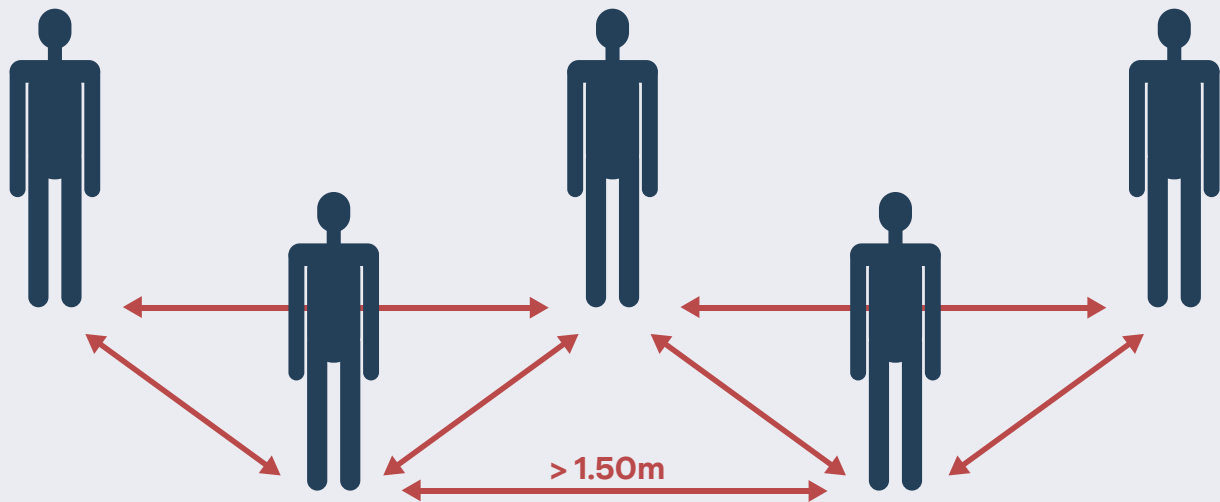


DISTANCING



Please always keep a distance of at least 1.50m from each other.

HAND WASHING



Hold your hands under running water

Soap your hands and wrists thoroughly (20-30 seconds)

Rinse well under running water

Carefully wipe your hands dry

Washing or disinfecting your hands, regularly and properly, is one of the most important preventive measures.

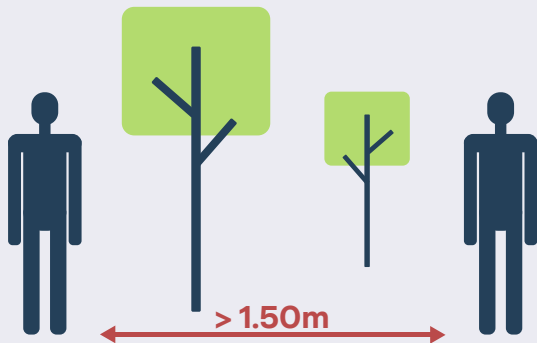
Please always wash your hands...

- before meals
- before handling cosmetics
- before putting on a face mask
- before leaving the shooting location

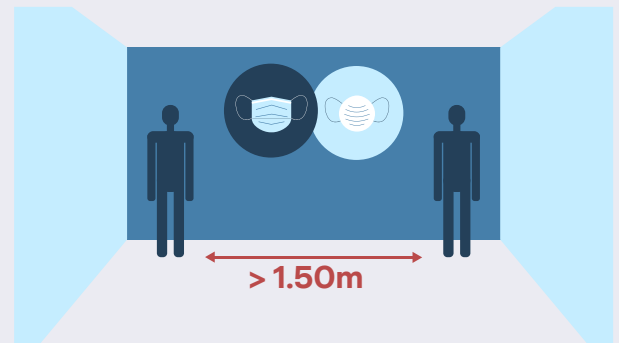
Please always wash your hands...

- after arriving at the shooting location
- after using the toilet
- after blowing your nose, sneezing or coughing
- after taking off your face mask
- after taking off gloves
- after being in contact with any sort of waste

MASK WEARING

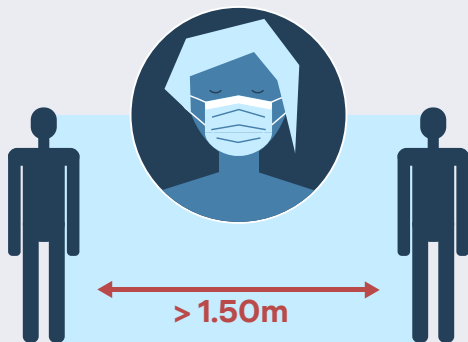


It is possible to stay outdoors without wearing a face mask – if the minimum distance of 1.50m from others is maintained. However, the recommendation is still to always wear a face mask.

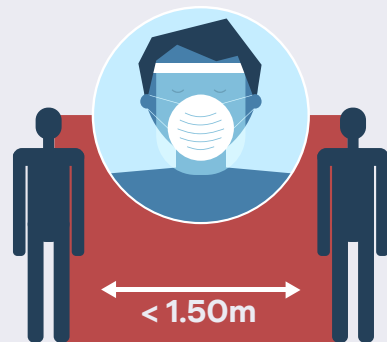


In a closed space, please always wear a face mask AND keep the minimum distance from others.

WHICH TYPE OF MASK AND WHEN?



At a distance of at least 1.50m the obligatory mouth and nose protection is sufficient.



If you are unable to keep the minimum distance (e.g. make-up), please wear a FFP2 mask (without valve) in combination with a face shield

If the contact will be short (e.g. when doing final checks on make-up), you can also wear a mouth-nose protection under a face shield instead of the FFP2 mask.

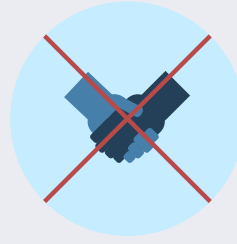


Please change and dispose the mouth and nose protection after a maximum of 4 hour wearing time. Subsequently, a short break in the fresh air is recommended.



The FFP2 mask (without valve) should be worn for a maximum of 75 minutes (and a maximum of 3 intervals per day). Afterwards it is necessary to dispose the mask and take a 30-minute break.

SNEEZING & COUGHING



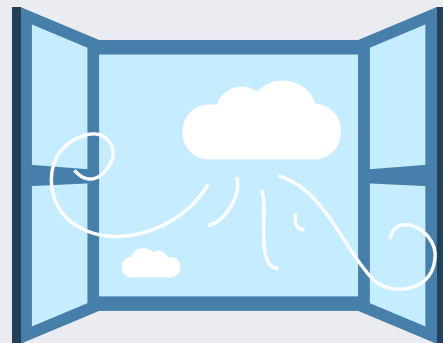
- Please keep at least 1.50m distance from others,
- turn away,
- sneeze or cough into a handkerchief, otherwise into the crook of your arm - even if you are wearing a mask.
- Please wash or disinfect your hands afterwards.

- Please use tissues only once and then dispose immediately.
- Please be careful and avoid touching your face with your hands.
- Please do not shake hands, hug and kiss.

VENTILATION

Regular ventilation is one of the most important measures to keep the accumulating germ count as low as possible. This also includes air-conditioned rooms.

Therefore, please ventilate the set in particular, as also all other rooms, hourly and sufficiently.



CLEANING & DISINFECTION

Please ensure that all surfaces in common rooms and sanitary facilities are disinfected regularly.

Particularly important are the contact points, i.e. door handles, handrails, taps, etc.



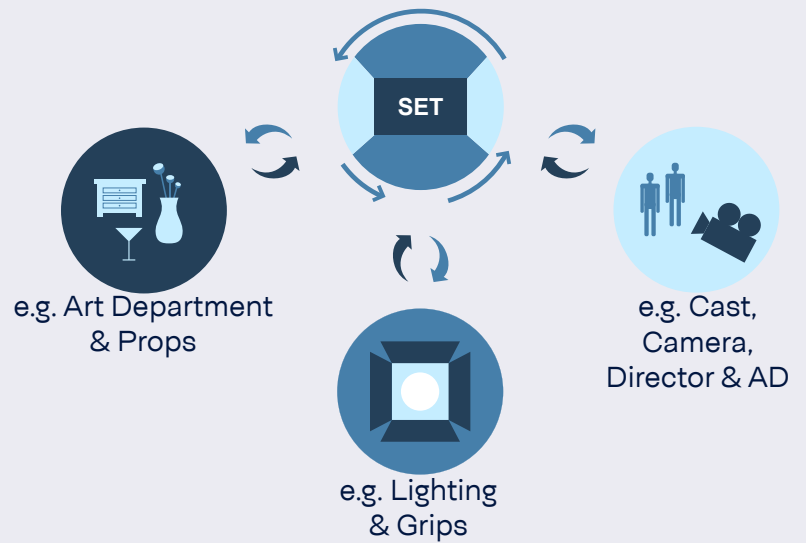
PANDEMIC-SETIQUETTE

CREW CLUSTER

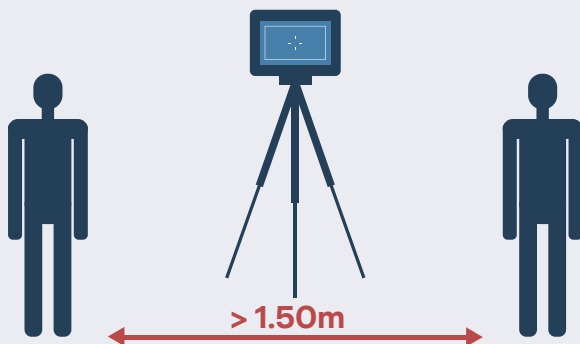
Individual departments or meaningful groups should only work alternately and consecutively on the set.

Therefore, e.g. only when art department has left the set, the lighting crew can start working on the set. Only when the lighting crew has left the set can the director come in to work with the DP and cast, etc.

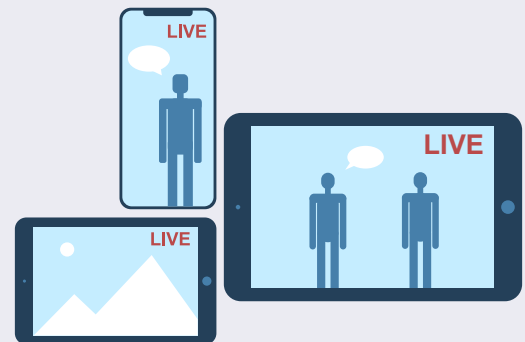
In this manner the minimum distance from each other can be maintained and the contact between each reduced to the necessary minimum.



VIDEO & LIVE-FEED

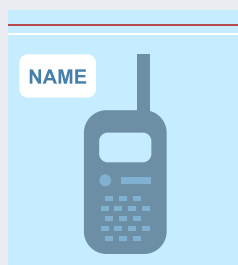


Please make sure that there are enough monitors on set so that the minimum distance of 1.50m can be maintained.

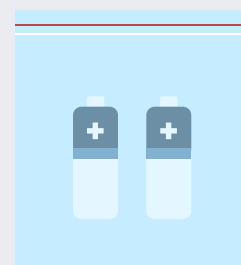


In addition, preferably as many of people as possible should use the live-stream on a private smart-phone or tablet.

RADIOS

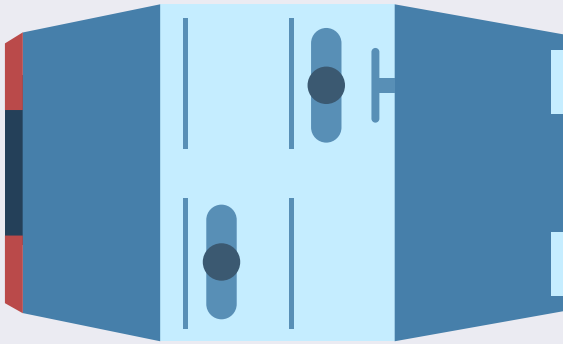


Please use only personalized radios. Everybody gets his own radio in a bag and keeps it through the duration of the entire project.

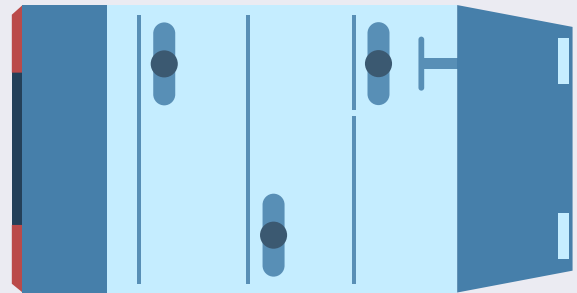


Also replacement batteries should always be handed over in plastic bags. Please disinfect used batteries before charging them and then repack them for dispensing.

PRODUCTION VEHICLES



In order to maintain the minimum distance, only one person should be transported in cars and only two in vans (placed offset).



Please ensure that the production vehicles are regularly ventilated and disinfected.

MEETINGS

Please conduct meetings, fittings, approvals and similar by telephone or video conference whenever possible.

